

DIRECTION & CONTROL

GENERAL: Johnson County policy is in full compliance with all state statutes and regulations governing the conduct of Emergency Management and Emergency Operations. As provided in County Resolution 064-95 and 023-03, the Director of Johnson County Emergency Management and Homeland Security (JCEMHS) is responsible to the County Manager and the Board of County Commissioners (BOCC) for the proper functioning of the Integrated Emergency Management System (IEMS) within Johnson County. The director is responsible for facilitating and coordinating Emergency Operations Center (EOC) operations, briefing and advising county leadership concerning emergency/disaster situations, coordinating overall disaster response, and serving as the primary point of contact with state and federal emergency management agencies.

EMERGENCY OPERATIONS CENTER (EOC):

- The county's primary EOC is located in the JCEMHS Department at 111 S. Cherry St., Suite 100, Olathe, Kansas. In the event that the primary EOC is rendered unusable, an alternate EOC would be established.
- The operational readiness of the primary and alternate EOCs will be ensured through a thorough training and exercise program as outlined in Annex R: Training & Education of this plan. The Director of JCEMHS is responsible for the operational readiness and integrity of both the primary and alternate EOCs.
- The county EOC may be activated or deactivated by any of the following individuals:
 - The Chairman of the BOCC
 - The County Manager
 - The Deputy or Assistant County Manager
 - The Director of Emergency Management and Homeland Security
 - Any of the designated Emergency Management and Homeland Security Duty Officers
- In the event of an immediate necessity to activate the EOC in the absence or pending the response of any of the above, the Director of the ECC or on-duty supervisor may temporarily activate the EOC at the alternate site until activation of the primary EOC occurs.
- Both EOC facilities are equipped with capabilities for limiting access during operations and these capabilities should be sufficient during most situations;

however, if additional security is required, the Sheriff's Office will be requested to provide security and access control.

- While the majority of staffing will be present in the EOC, critical information management systems (CIMS) and other data/communications links can also integrate remote staff into a "virtual EOC". CIMS technology not only enhances operations within the EOC, but enables the exchange of real-time, critical information between organizations on the city, county, state and regional levels.

Figure A-1 depicts the overall EOC organization, while Figure A-2 shows some of the primary functions performed within each organizational group. A *Manual of Operations, Johnson County EOC* (maintained separately) provides the details of EOC operations. The relationship among the county EOC, city EOCs, the Emergency Communications Center (ECC), and the Incident Command System (ICS) structure is outlined in Figure A-3.

All response agencies in Johnson County operate using ICS for on-scene control (See also Annex F: Fire Suppression / Search & Rescue). Emergency responders will be integrated into the ICS at staging areas designated by the Incident Commander. All emergency response agencies within the county are responsible for the training and exercising of the ICS within their agencies.

EOC ACTIVATION & STAFFING GUIDELINES:

- **Level - 1**

- Activation Criteria: Normally weather related incidents requiring close monitoring of the situation by Emergency Management and Homeland Security staff and volunteer units with EOC and field responsibilities.
- Staffing:
 - Emergency Management and Homeland Security Director and/or Duty Officer
 - Back-up Duty Officer (as required)
 - Radio Amateur Civil Emergency Service (RACES) Net Controller (as required)

- **Level - 2**

- Activation Criteria: Any incident or impending incident, requiring the presence of emergency service personnel and others to be in close contact with each other to manage the incident. Selected individuals/ departments may be requested to respond at this level in lieu of a full Level-3 Activation.
- Staffing:
 - JCEMHS Director
 - JCEMHS Staff
 - RACES Net Controller (as required)

- Amateur Radio Emergency Service (ARES) Packet Radio Operator (as required)
- Other Volunteer Staff (as required)
- Other Department/Agency Staff (as required)

- **Level - 3**

- Activation Criteria: A major disaster requiring coordination of the efforts of elected officials and top-level management in conjunction with the emergency services and support agencies.
- Staffing:
 - Deputy and/or Assistant County Manager
 - JCEMHS Director & Staff
 - Emergency Communications Center Director or designee
 - Chairman of the Board Of County Commissioners
 - County Commissioner(s)
 - County Manager
 - Chief Legal Counsel
 - Public Information Officer
 - Sheriff's Office Liaison
 - Med-Act Operations Supervisor
 - Other County Department/Agency Staff (as required)
 - City Liaison(s) (as required)
 - State Liaison(s) (as required)
 - American Red Cross
 - Salvation Army
 - Other Volunteer Agencies (as required)
 - Other Volunteer Staff (as required)
 - RACES Net Controller (as required)
 - ARES Packet Radio Operator (as required)

Note: Selected individuals/departments may be requested to respond to the EOC at a level other than which they are listed in lieu of a full activation of that level. Agencies may utilize the EOC at Level -1 to accomplish a specific mission (i.e., civil disturbance, fire, medical, etc.)

EOC Organization

Red denotes
External Agencies

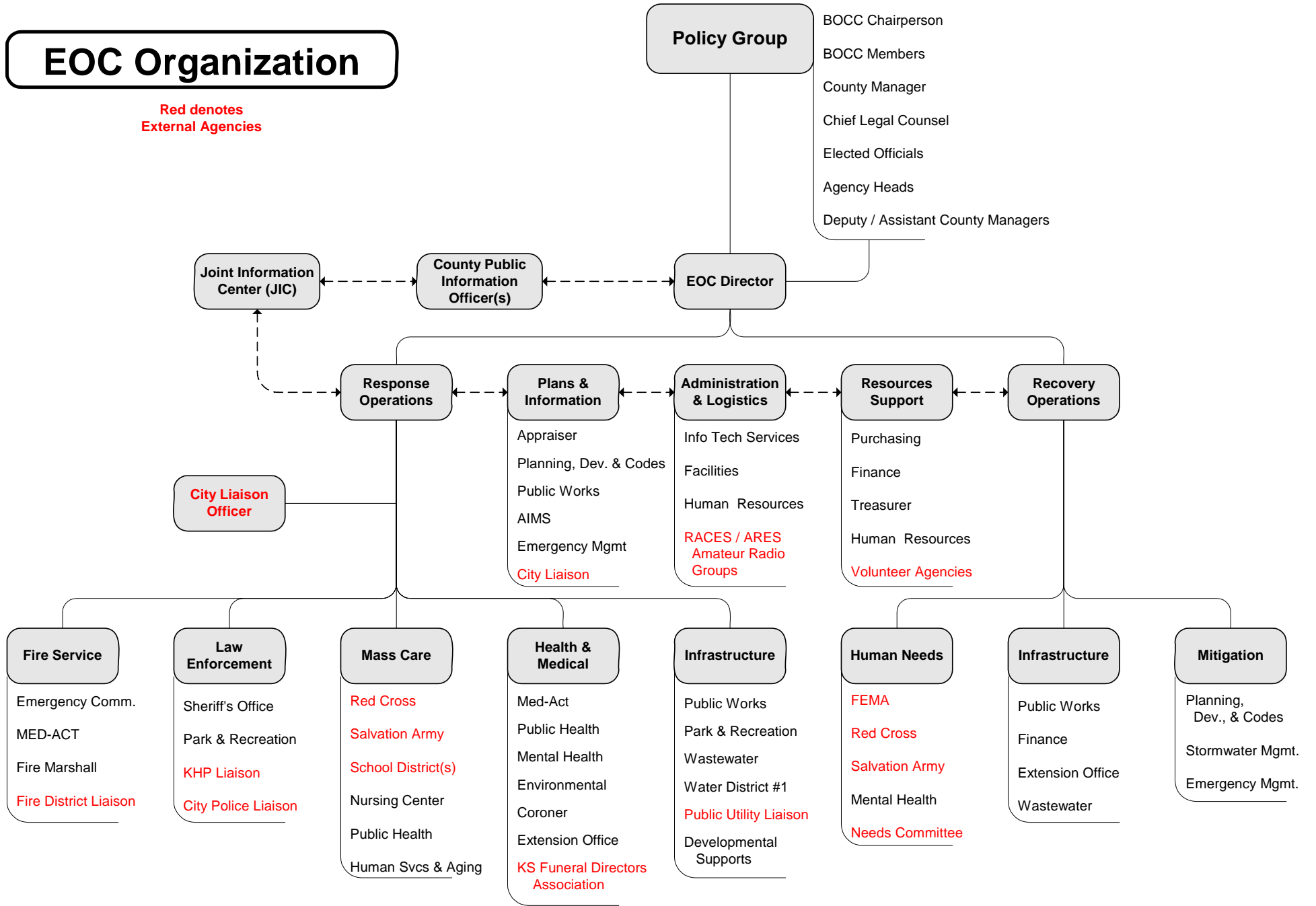


Figure A-1

EOC Functions

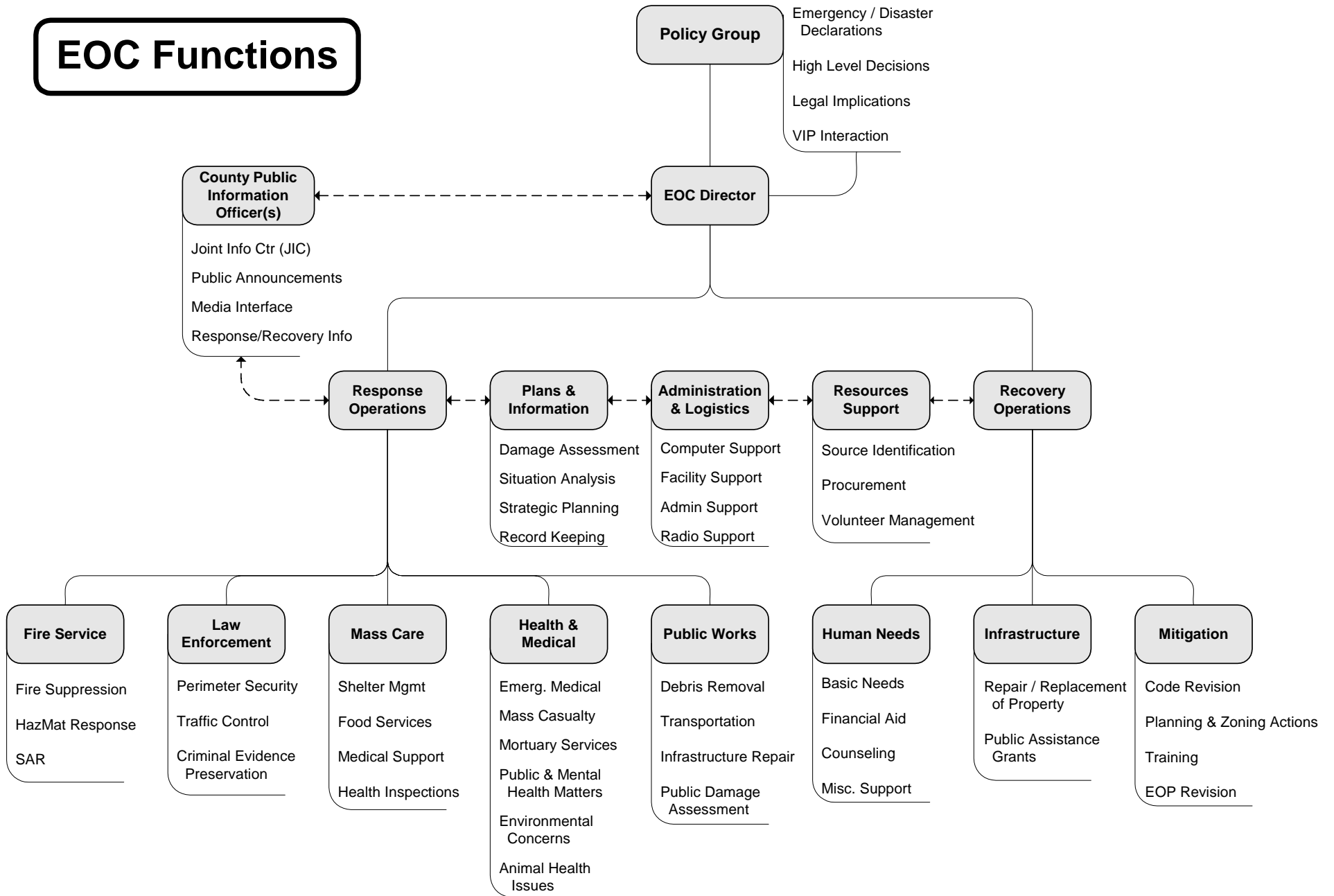
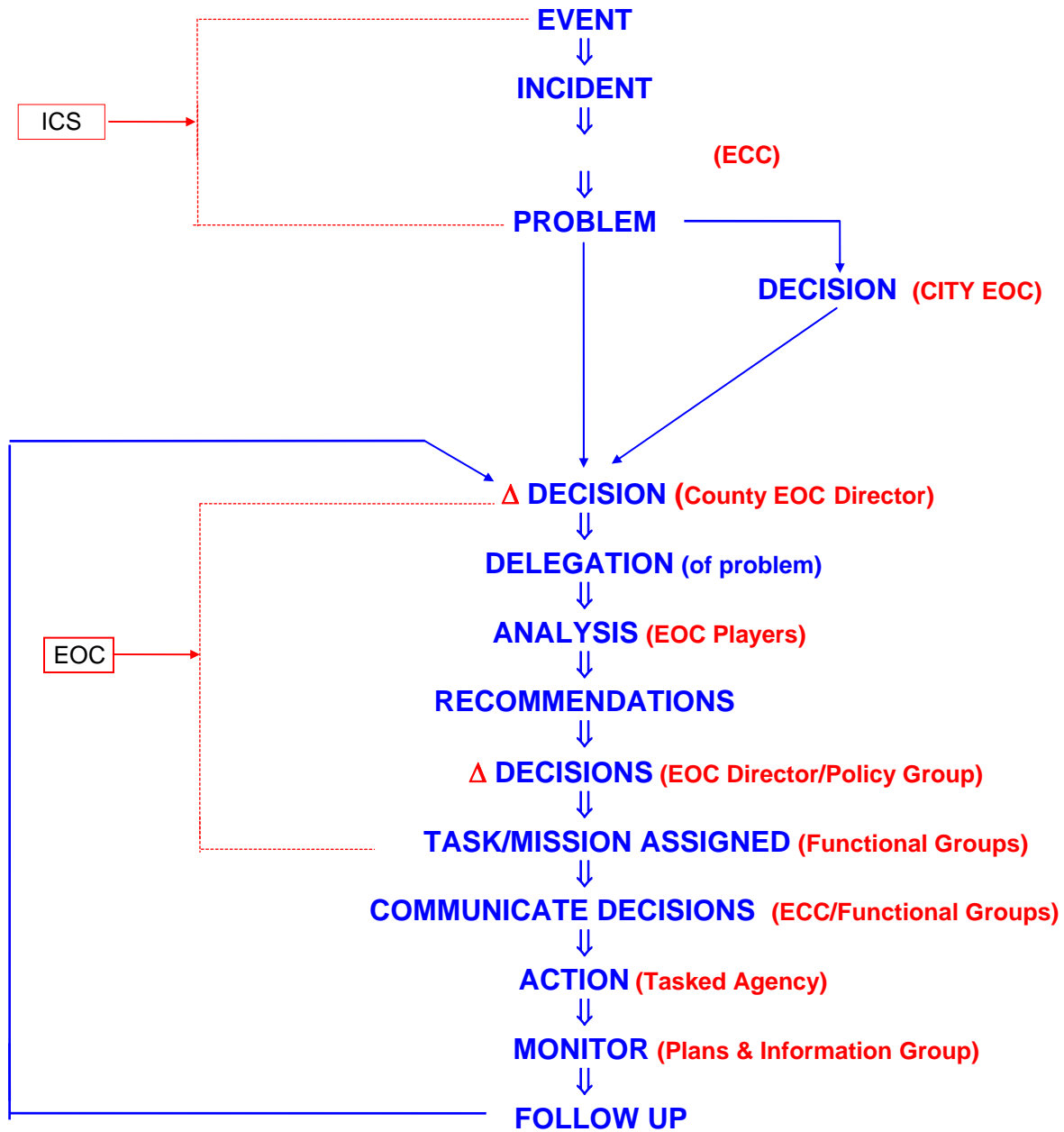


Figure A-2

EMERGENCY/DISASTER EVENT FLOW CHART



LEGEND:
BLUE: WHAT
RED: WHO
Δ: TRIAGE

Figure A-3